

Idaho Settlement Agreement

Remote Handled Transuranic Waste (RH-TRU)



Ben Roberts, Solid Waste Disposition Manager

June 12, 2013



EM *Environmental Management*

INL RH-TRU Waste

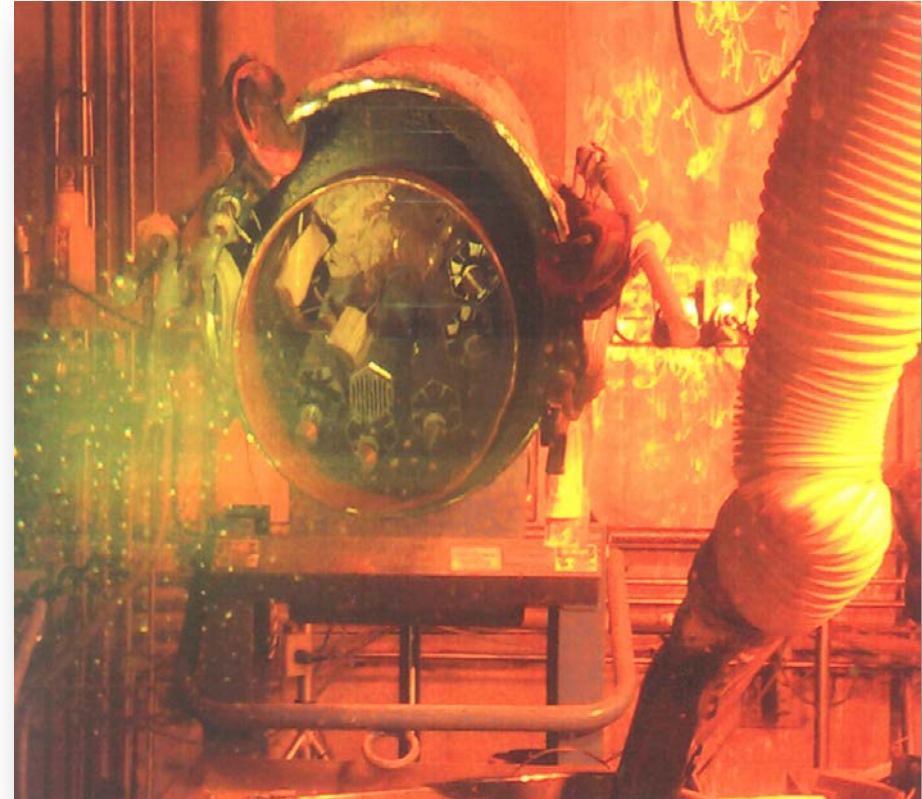
- Primary Generators:
 - Rocky Flats, Navy, Argonne National Lab, Idaho National Lab
- Primary Storage Locations:
 - INTEC, MFC, AMWTP, RWMC
- Characteristics:
 - Very high radiation fields
 - Sodium and/or pyrophoric metal fines
- Composition:
 - Reactor components such as reactor core structures
 - Fines from cutting fuel for research
 - Hot cell debris such as rags and tools
- Challenges:
 - Limited number of facilities
 - Shielding and remote handling required
 - Treatment of reactive materials
 - Processing is slow and expensive



EM *Environmental Management*

Definition of ISA Transuranic Waste

- **ISA TRU Waste Is:** Material Stored in Idaho as TRU Waste in October 1995 Including:
 - All Material at AMTWP
 - Material from Other INL Locations Stored as TRU Waste in 1995
 - Material that was Historically Managed as TRU Waste
- **ISA TRU Waste Is Not:** Material Stored in Idaho as Something Other than TRU Waste in October 1995 Including:
 - Accountable Material, Spent Nuclear Fuel, or High Level Waste
 - Low Level Waste (Including Mixed)



EM *Environmental Management*

RH-TRU Inventory Definition Process

- June 21, 2012 – Presentation to DEQ on RH-TRU Inventory
 - Define Idaho Settlement Agreement RH-TRU
 - Discuss Idaho Settlement Agreement RH-TRU Inventory
 - Provide RH-TRU Disposal Completed to Date
 - Provide RH-TRU Work-Off Plan
- Aug. 28, 2012 – RH-TRU Inventory Formally Transmitted to DEQ
 - Provide Detailed Inventory of Idaho Settlement Agreement RH-TRU by Container Number
- Nov. 16, 2012 – Formal Response Received from DEQ
 - Acknowledge that non-Idaho Settlement Agreement RH-TRU Disposition from Idaho will Occur Beyond 2018 in Accordance with the Site Treatment Plan Requirements



***EM** Environmental Management*

Idaho Settlement Agreement (ISA) Compliance

- ISA RH-TRU Inventory: 143 m³ of 65,000 m³ stored in 802 containers
- 685 of 802 containers disposed of off-site by Sept. 30, 2012
- 96% of the ISA RH-TRU will be out of Idaho by the Target Date of Dec. 31, 2015
- All ISA RH-TRU containers will be disposed of off-site by Sept. 30, 2017

Note: Additional ISA RH-TRU waste could be discovered at AMWTP during waste retrieval operations.



Remaining RH-TRU Program Work

- Idaho Settlement Agreement RH-TRU final shipment planned for FY2017
 - Requires removal of sodium from 27 containers of waste prior to disposal
- 103 containers of Naval Waste
- 188 containers of Site Treatment Plan RH-MLLW
- 31 + up to 10/yr containers of newly generated RH-TRU waste from ongoing Research
- Material reclassified as waste - potential sources: Accountable Material, SBW, SNF

Note: DOE will prioritize other inventories for continued waste disposal beyond FY2018.



ICP RH-TRU Program Accomplishments

- Idaho was the first site to ship RH-TRU to WIPP
- Idaho is the largest supplier of RH-TRU to WIPP
- 310 RH-TRU shipments have been made from Idaho to WIPP to date
- 85% of Idaho Settlement Agreement containers have been disposed of to date
- 107 containers of non-Settlement Agreement RH-TRU have been disposed of to date
- 77 additional containers are repackaged but awaiting shipment out of Idaho

